

Medium-speed power generation

B32:40V LIQUID FUEL

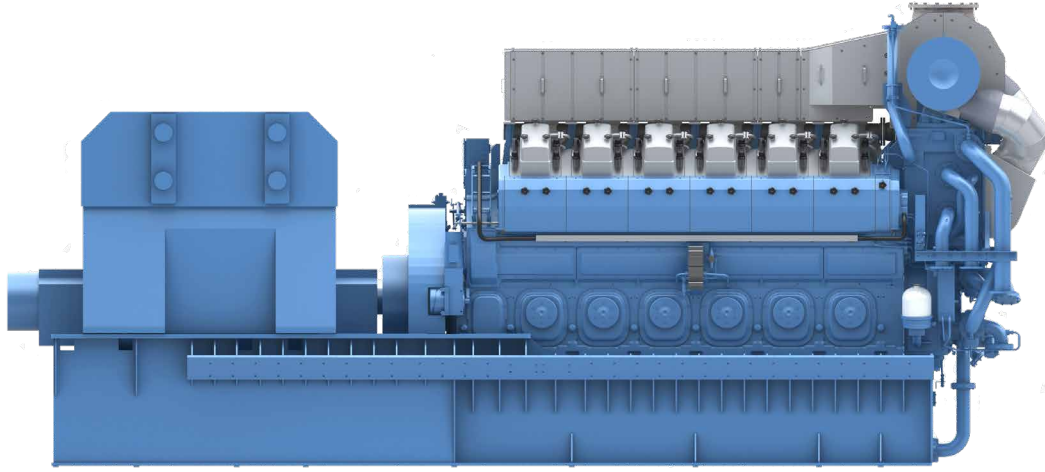
The Bergen B32:40 generating sets deliver a combination of high performance and reliability combined with cost-effective operation.

Powerful and reliable

The Bergen B32:40 generating sets are designed to meet customer needs for power, flexibility and ease of maintenance. The engine is built on a wealth of experience where the latest analysis and development tools, materials and component technology are used to produce an exceptionally reliable engine with low wear, high availability and long service intervals.

Your benefits

- High power output
- High electrical efficiency
- Low service and maintenance costs
- Maintenance friendly
- Proven technology
- Sturdy construction

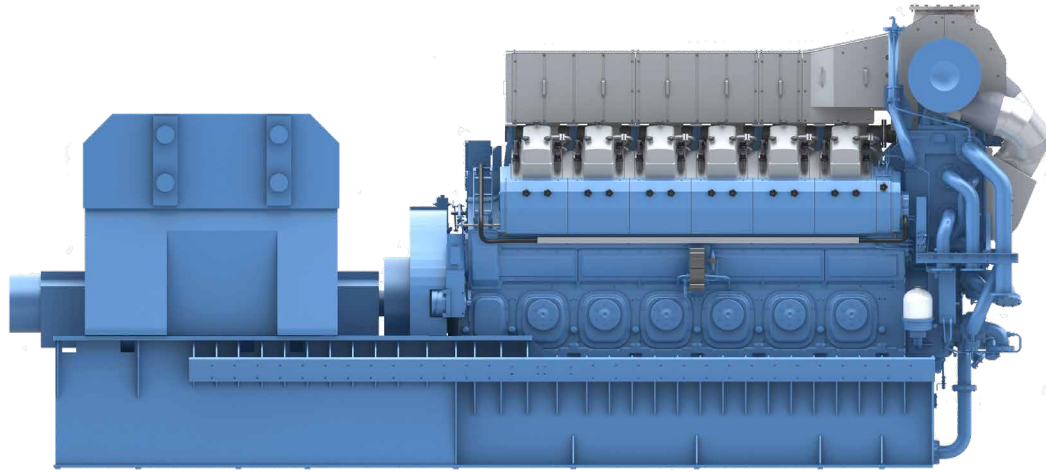


Main dimensions - cylinder diameter 320 mm, piston stroke 400 mm

Weight and dimensions	Weight kg	Length	Width	Height
B32:40V12 AG	96000	10575	2750	4620
B32:40V16 AG	115000	11565	3306	4545
Technical data	Unit	B32:40V12AG	B32:40V16AG	
Number of cylinders		12	16	
Engine speed	r/min	750	750	
Electrical output	kW	5280	7055	
Charge air cooler HT	kW	1205	1570	
Charge air cooler LT	kW	500	655	
Lube oil cooler	kW	660	865	
Jacket water cooler	kW	860	1120	
Exhaust mass	kg/h	38600	51600	
Exhaust gas temperature	°C	315	315	
Nom. el. efficiency	%	44.8	45.9	

General conditions

- Depending on type of generator the weight, performance and dimensions may change
- All technical data is valid at 100% load, with no engine driven pumps
- Engine power definition is according to ISO 3046-1 (ICFN)
- Generator standard IEC 60034-1, power factor 1
- Specific fuel oil consumption is measured at test bed according to ISO 3046-1, using diesel oil with a net heating value of 42.7 MJ/kg
- The information herein is subject to change without notice and the given data does not carry any contractual value. Rolls-Royce assumes no responsibility for any errors that may appear



Main dimensions - cylinder diameter 320 mm, piston stroke 400 mm

Weight and dimentions	Weight kg	Length	Width	Height
B32:40V12 AG	96000	10550	2650	4220
B32:40V16 AG	115000	12000	2650	4220
Technical data	Unit	B32:40V12AG	B32:40V16AG	
Number of cylinders		12	16	
Engine speed	r/min	720	720	
Electrical output	kW	5070	6775	
Charge air cooler HT	kW	1150	1500	
Charge air cooler LT	kW	480	625	
Lube oil cooler	kW	630	825	
Jacket water cooler	kW	820	1070	
Exhaust mass	kg/h	37100	49500	
Exhaust gas temperature	°C	315	315	
Nom. el. efficiency	%	45.0	46.1	

General conditions

- Depending on type of generator the weight, performance and dimensions may change
- All technical data is valid at 100% load, with no engine driven pumps
- Engine power definition is according to ISO 3046-1 (ICFN)
- Generator standard IEC 60034-1, power factor 1
- Specific fuel oil consumption is measured at test bed according to ISO 3046-1, using diesel oil with a net heating value of 42.7 MJ/kg
- The information herein is subject to change without notice and the given data does not carry any contractual value. Rolls-Royce assumes no responsibility for any errors that may appear



The information herein is subject to change without notice and the given data does not carry any contractual value. Rolls-Royce assumes no responsibility for any errors that may appear.

Rolls-Royce Group
bergen.rolls-royce.com

Subject to change. Rev A 2020